



## 21 Reasons to Upgrade to MyPC 4.0

---

# 21 Reasons to Upgrade to MyPC 4.0

MyPC 4.0 represents the culmination of extensive customer feedback. This document outlines the new platforms supported, those platforms where support has been withdrawn and most importantly the major new features of this release.

New MyPC 4.0 components are available for all aspects of the solution, both client and server. No updates require a client upgrade however there are minor implications for queued booking where 3.x clients are used. This is discussed later in this document using red text.

## ***Supported Platforms***

The following server platforms are supported by MyPC 4.0 (32-bit / 64-bit):

- Windows 2003 Server
- Windows 2008 Server

The following database management systems are supported by MyPC 4.0:

- Microsoft SQL 2005 Server (including the free Express Edition)
- Microsoft SQL 2008 Server (including the free Express Edition)

The following client platforms are supported by MyPC 4.0 (32-bit only):

- Windows XP (AD, Novell, RM, LDAP and Public Library environments)
- Windows Vista (AD, Novell and RM environments)
- Windows 7 (AD and Novell environments)
- Windows 2003 Terminal Server (AD and Novell environments)
- Windows 2008 Terminal Server (AD and Novell environments)
- VMware VDI / RDP connecting to virtualised XP, Vista and Windows 7 desktops (similar solutions may also work) both AD and Novell environments are supported.
- Mac OS 10.4 (AD, Novell (via the Kanaka client), LDAP and Public Library environments)

## ***Discontinued Platforms***

The following server platforms are no longer supported by MyPC 4.0:

- Windows 2000 Server

The following database management systems are no longer supported by MyPC 4.0:

- MSDE 2000A
- Microsoft SQL 2000 Server

The following client platforms are no longer supported by MyPC 4.0:

- Windows 2000 Professional

***Please note that Microsoft Internet Explorer 6 is not supported.***

***Please also note that MyPC 4.0 Server is backward compatible with MyPC 3.x Clients and therefore users of Windows 2000 Professional can continue to use MyPC until they upgrade to a supported client operating system.***

## ***Discounted Features***

### **1. AutoUpgrade**

MyPC 4.0 no longer includes the AutoUpgrade feature which has been removed from the product.

## ***New Features***

### **1. Support for Windows 7**

The MyPC 4.0 Classic Client supports Windows 7 in both Active Directory and Novell environments (please note that the Novell Client does not yet officially support Windows 7).

### **2. Novell Support on Windows 2003 Terminal Server**

The MyPC 4.0 Terminal Client now also supports Windows 2003 Terminal Server in Novell environments. Previously only Active Directory environments were supported.

### **3. Support for Windows 2008 Terminal Server**

The MyPC 4.0 Terminal Client supports Windows 2008 Terminal Server in both Active Directory and Novell environments.

### **4. VMware VDI / RDP Support**

MyPC 4.0 supports VDI environments where thin client devices connect to virtualised XP Vista and Windows 7 desktops using technology such as VMware VDI and Microsoft Remote Desktop. Both Active Directory and Novell environments are supported.

### **5. Admin MSI Installer**

The MyPC 4 Client now features an Admin MSI installer whereby the administrator selects the options they require and a custom MSI is generated negating the need to use MST files.

### **6. Farewell to the MyPC Local Admin Logon**

In MyPC 4 by default the MyPC Client will not start if users, typically administrators, logon locally. In Active Directory environments this will occur when logging on to the local PC (This Computer) as opposed to logging into a domain. In Novell environments this will occur when logging on to Windows (either the local PC (This Computer) or a domain) hence bypassing the Novell logon. This functionality replaces the MyPC Local Admin Logon functionality that required IT Administrators to enter a MyPC Local Admin Password to access PCs free from MyPC's control. Please note that if your organisation does require MyPC to regulate local logon this new functionality can be disabled.

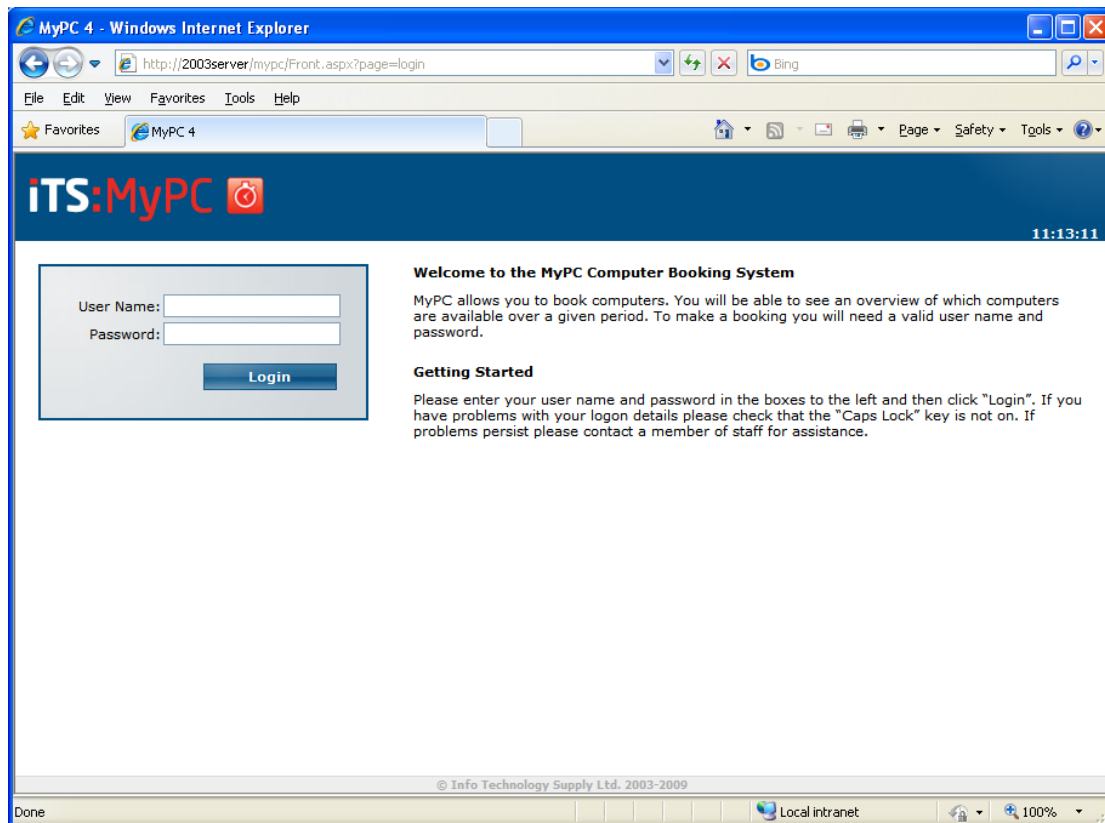
### **7. MyPC 4 Does Not Replace the Microsoft, Novell or RM GINA**

The MyPC 4 Client no longer replaces the Microsoft, Novell or RM GINA on Windows XP and Windows 2003 Terminal Server. On Windows XP MyPC solely uses pre-logon screensaver technology to present the "Status Screen" which looks very similar to that shown in MyPC 3.x. On Windows 2003 Terminal Server and VMware VDI no status screen can be shown but users sessions are regulated as per previous versions. This architectural change ensures that MyPC 4 will have even less impact on customers' existing IT infrastructure and allows ITS to support new platforms such as VMware VDI and Terminal Services for Novell.

The "Status Screen" method remains the same on Windows Vista which uses a "tile" on the logon window as does the MyPC 4 implementation for the Windows 7 Classic Client and Windows 2008 Terminal Services Client.

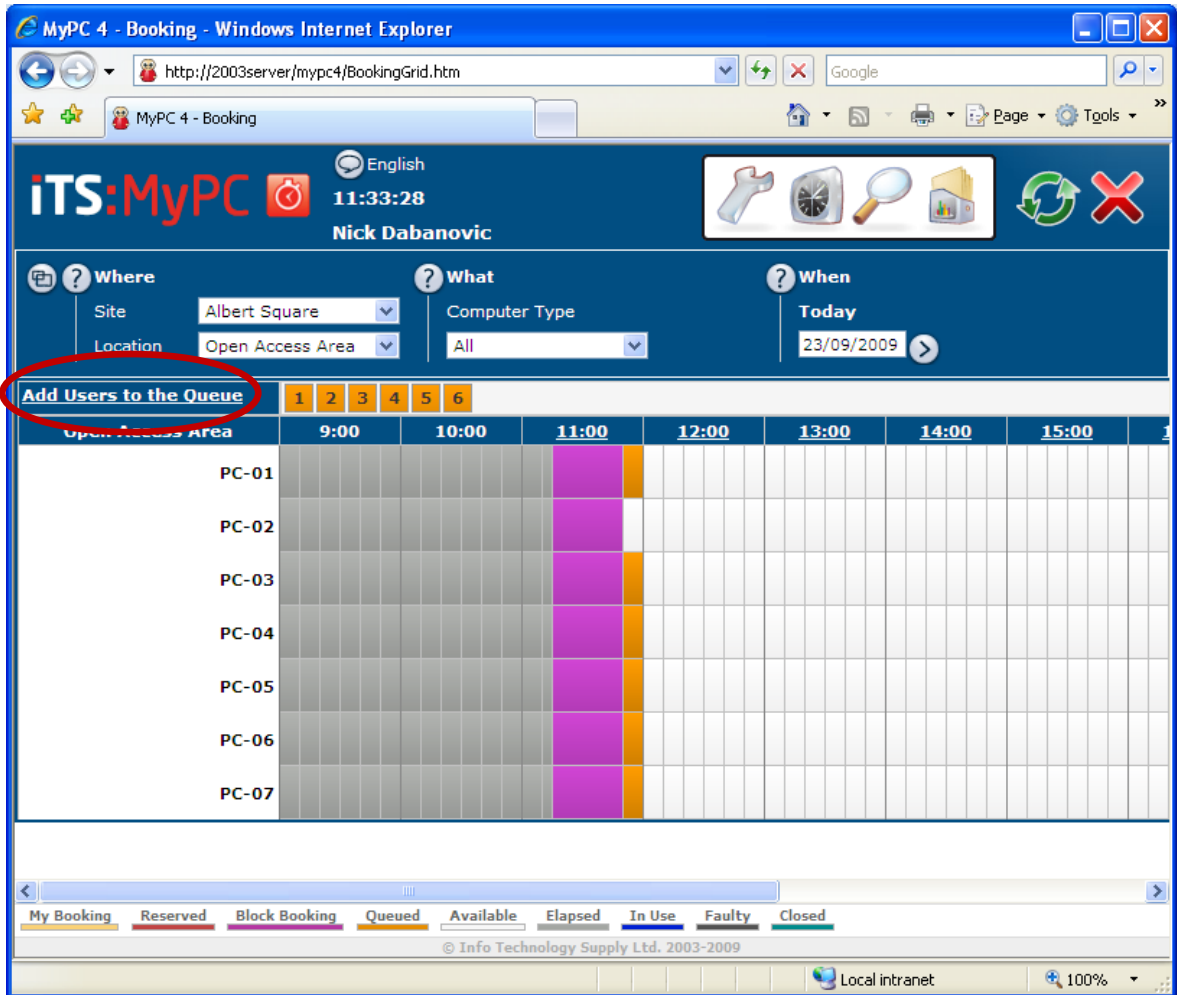
### **8. An Updated Appearance**

MyPC 4.0 features a mildly updated look and feel providing the solution with a more modern, "maturing" appearance. The logon screen has been mildly updated, the booking screen legend has been changed and so too have the MyPC logos used throughout.



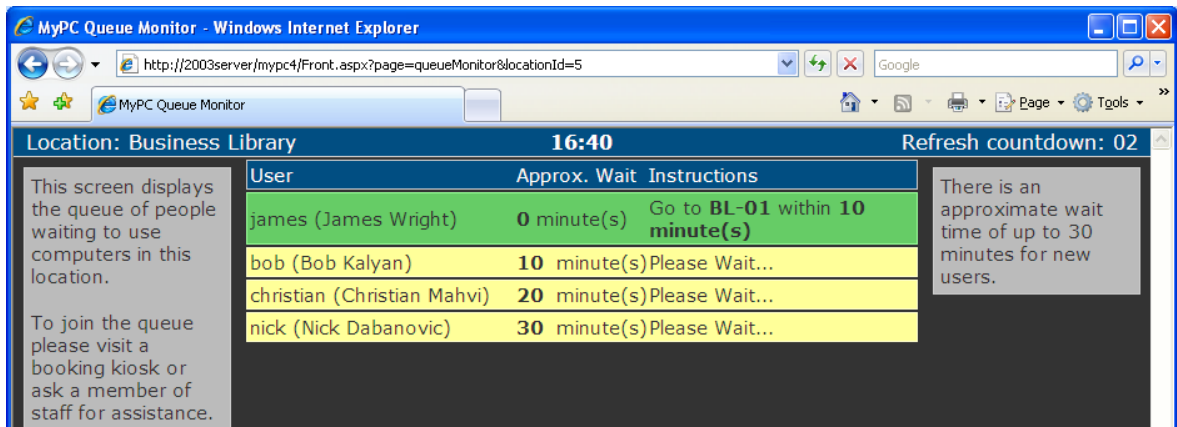
## 9. Update Booking Screen without a Total Refresh (AJAX)

The MyPC 4.0 web interface has been totally redeveloped using AJAX web development techniques. As a result the booking grid updates itself without refreshing the entire screen. For example if you book a PC for an hour only the cells affected will update.



### 10. Queued Bookings

MyPC 4.0 introduces a new Queued booking method that allows users to queue for PCs during busy periods. The system can be configured so that users join the queue via the booking screen or staff can enter them into the queue (see the screenshot above). A web-based queue monitor application allows users to view their progress through the queue. The queue monitor is designed to run on a plasma screen or monitor on public display (see the screenshot below). Alternatively the queue's progress can be tracked by staff on the booking screen.



**Please note that the new queuing functionality supports both MyPC 3.x and 4.x clients. However queuing introduces new statuses "Queued Booking Only" and "Queued and Advanced Booking" to be displayed on MyPC client machines where**

**appropriate. MyPC 3.x clients are unable to display these status and therefore “Queued Booking Only” becomes “Book With Staff” and “Queued and Advanced Booking” becomes “Advanced Booking Only”.**

## 11. Tutor Policies

A new system of Tutor Policies has been introduced allowing organisations that use MyPC to configure the following:

- The locations in which Tutors are allowed to make bookings.
- The maximum number of block bookings allowed per day.
- The maximum number of block bookings allowed per week.
- The maximum block bookings time allowed per day.
- The maximum block bookings time allowed per week.
- The number of days block bookings can be made in advance.
- The maximum number of outstanding block bookings.
- The maximum number of computers per block booking.

Please note that Tutor Policies can be configured to differ from location to location.

Tutor Policy Properties	
Name	<input type="text" value="Tutor Policy"/>
Maximum number of block bookings allowed per day	<input type="text" value="5"/>
Maximum number of block bookings allowed per week	<input type="text" value="25"/>
Maximum block bookings time allowed per day	<input type="text" value="180"/>
Maximum block bookings time allowed per week	<input type="text" value="900"/>
Number of days block bookings can be made in advance	<input type="text" value="14"/>
Maximum number of outstanding block bookings	<input type="text" value="5"/>
Maximum number of computers per block booking	<input type="text" value="20"/>
Description	<input type="text"/>
<input type="button" value="Save"/> <input type="button" value="Delete"/> <input type="button" value="Cancel"/>	

## 12. Desktop Profiles

A new system of desktop profiles has been developed for users of the MyPC Public Library / LDAP client. Desktop profiles determine how MyPC will log the user on to Windows. Previously it was only possible to determine which Windows username and password would be used for any given user group. In MyPC 4.0 it is also possible to configure the details used to logon to Windows at the computer level which overrides any desktop profiles set at the group level.

**Resource Properties**

Name: BL-01

NetBIOS Name: XPNONAD2

Resource Type:  1,  2,  3,  4,  5

Location: Business Library

Logging level: Off

Desktop Profile: default

Description: [Empty text area]

Buttons: Save, Delete, Cancel

**13. Manually Type in the Date**

In MyPC 4.0 it is now possible to manually type in the date in addition to using the calendar to select the date required.

**14. Option to Allow or Prevent NTAs from Sending Free Text Messages**

MyPC 4.0 includes a new feature to allow or prevent NTAs from entering free text ban and unban reasons which can be switched on or off in MyPC Web Admin via Access Settings.

**15. Log Sent Messages**

MyPC now logs all messages sent by staff in the MyPC Server log file, which can be interrogated if issues arise.

**16. First Name Last Name in Tooltips**

MyPC 4.0 displays, where available, the user's first name and last name in tooltips on the booking and web admin screens. This feature is designed to help sites where usernames are solely a sequence of numbers or characters as opposed to names.

12:00	13:00	14:00	15:00
<div style="border: 1px solid black; padding: 5px; background-color: yellow;">           User Booking for 'noleen (Noleen van Deventer)' from 12:00 to 13:00         </div>			

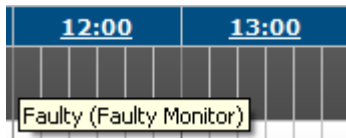
**17. Tooltips Show Why a User is Banned**

Tooltips in MyPC Web Admin show the reason why a user is banned. This feature eliminates the need to click on the user and open the Ban/Unban screen to view this information.



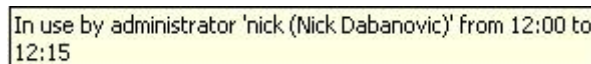
**18. Tooltips Show Why a Computer is Faulty**

Tooltips on the booking screen and in MyPC Web Admin show the reason why a computer is marked faulty. This feature eliminates the need to go into Web Admin click on the computer and open the Faulty/Working screen to view this information.



**19. In Use by Administrator Tooltips**

When a computer is in use by an Administrator tooltips on the booking screen will state “In Use by Administrator”, the username and where available the first name, last name of the person.



**20. Default to All Sites and All Locations when “Allowing In”**

When allowing a User Group into Sites and Locations MyPC 4.0 defaults to All Sites and All Locations.

**21. Policies Listed in Alphabetical Order**

All policies defined in MyPC Web Admin are now ordered alphabetically.

**Any Questions?**

If you have any questions about the new features and functionality of MyPC 4.0 please do not hesitate to contact the MyPC team via e-mail at [mypc@itsltduk.com](mailto:mypc@itsltduk.com) or call +44 (0)20 8869 1950.

***“ITS:MyPC” is a registered trademark of Info Technology Supply Ltd.***